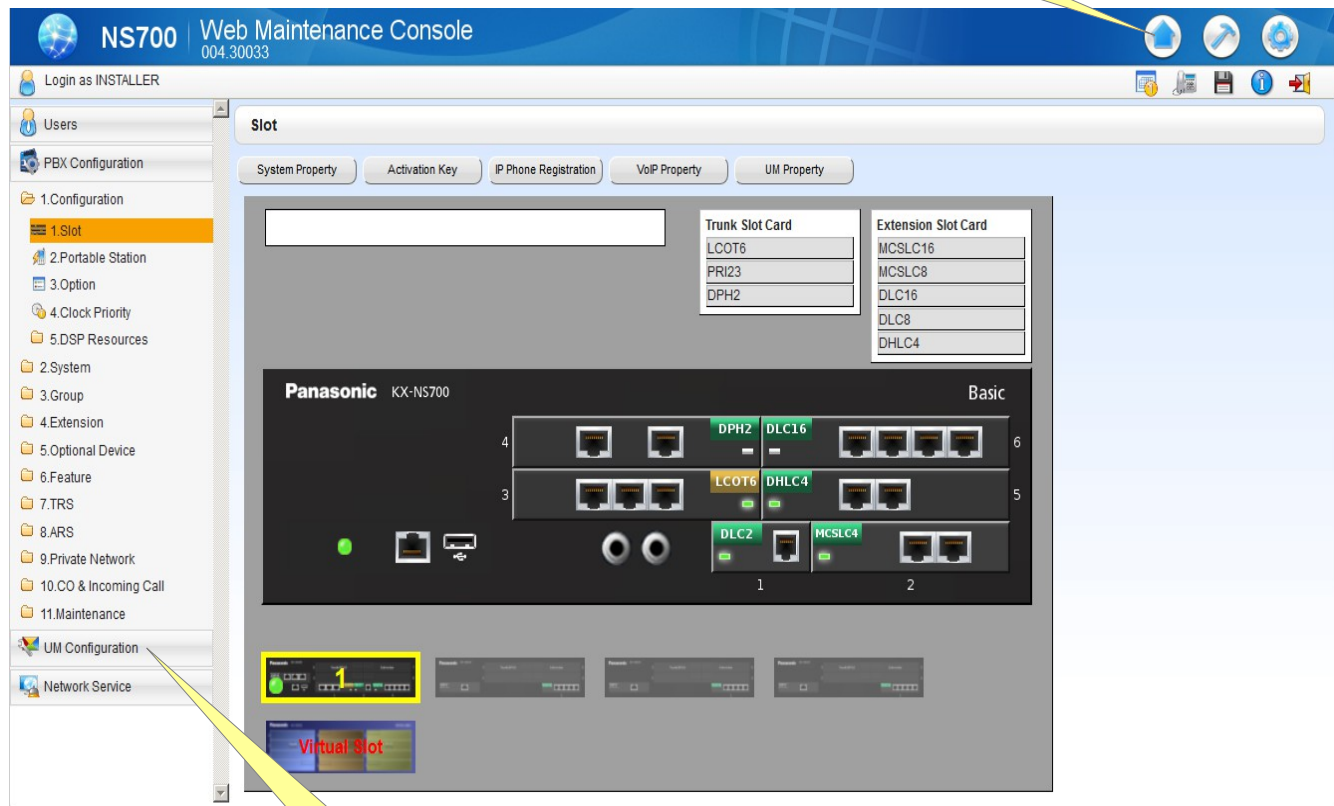


# UCM Custom Service Menu Control Panasonic KX-NS700 Telquest Tech Support

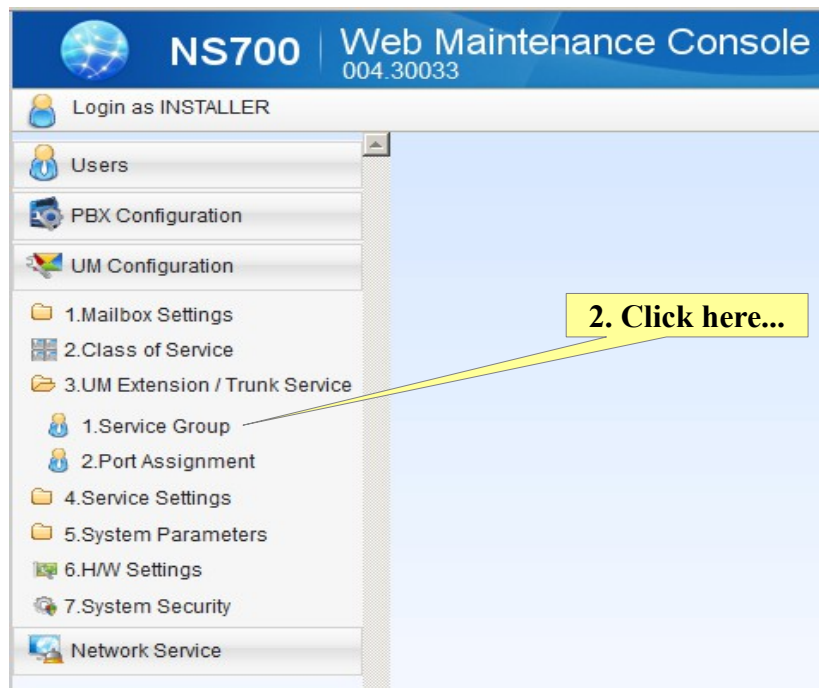
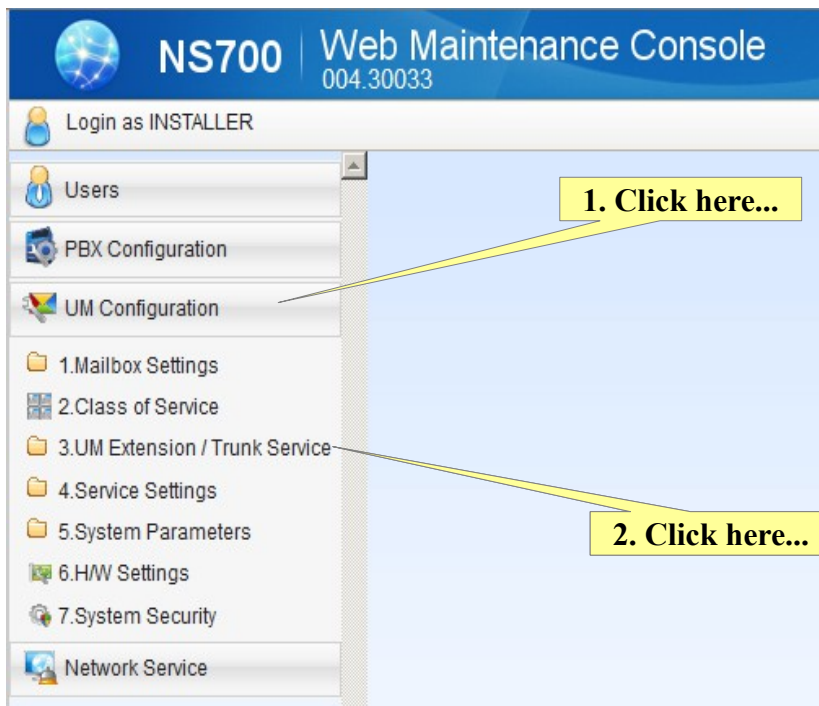
This explains which Custom Service Menu is used when in Day/Night Mode

1. Click here...



2. Click here...

I will be using Custom Service Menu 1 for Day and Custume Service Menu 2 for Night



This is how we select which Custom Service Menu is used for each Mode. (Day/Night)

NS700 Web Maintenance Console  
004.30033

Login as INSTALLER

Users  
PBX Configuration  
UM Configuration  
1. Mailbox Settings  
2. Class of Service  
3. UM Extension / Trunk Service  
1. Service Group  
2. Port Assignment  
4. Service Settings  
5. System Parameters  
6. HW Settings  
7. System Security  
Network Service

Service Group

Service Group

No.	Day Mode - Company Greeting No. (Selection)	Day Mode - Company Greeting No. (Other)	Day Mode - Incoming Call Service	Day Mode - Incoming Call Service Parameter	Day Mode - Incoming Call Service Prompt	Day Mode - Prompt for DTMF Input Callers
	ALL		ALL		ALL	ALL
1	Other	1	Custom Service Menu	1	Primary	Primary
2	Other	1	Custom Service Menu	1	Primary	Primary
3	Other	1	Custom Service Menu	1	Primary	Primary
4	Other	1	Custom Service Menu	1	Primary	Primary
5	Other	1	Custom Service Menu	1	Primary	Primary
6	Other	1	Custom Service Menu	1	Primary	Primary
7	Other	1	Custom Service Menu	1	Primary	Primary
8	Other	1	Custom Service Menu	1	Primary	Primary
9	Other	1	Custom Service Menu	1	Primary	Primary
10	Other	1	Custom Service Menu	1	Primary	Primary
11	Other	1	Custom Service Menu	1	Primary	Primary
12	Other	1	Custom Service Menu	1	Primary	Primary
13	Other	1	Custom Service Menu	1	Primary	Primary
14	Other	1	Custom Service Menu	1	Primary	Primary

1. Set to 1...

2. Scroll over...

View 1-64 of 64

OK Cancel Apply

NS700 Web Maintenance Console  
004.30033

Login as INSTALLER

Users  
PBX Configuration  
UM Configuration  
1. Mailbox Settings  
2. Class of Service  
3. UM Extension / Trunk Service  
1. Service Group  
2. Port Assignment  
4. Service Settings  
5. System Parameters  
6. HW Settings  
7. System Security  
Network Service

Service Group

Service Group

No.	Night Mode - Company Greeting No. (Selection)	Night Mode - Company Greeting No. (Other)	Night Mode - Incoming Call Service	Night Mode - Incoming Call Service Parameter	Night Mode - Incoming Call Service Prompt	Night Mode - Prompt No DTMF Input Callers
	ALL		ALL		ALL	ALL
1	Other	1	Custom Service Menu	2	Primary	Primary
2	Other	1	Custom Service Menu	2	Primary	Primary
3	Other	1	Custom Service Menu	2	Primary	Primary
4	Other	1	Custom Service Menu	2	Primary	Primary
5	Other	1	Custom Service Menu	2	Primary	Primary
6	Other	1	Custom Service Menu	2	Primary	Primary
7	Other	1	Custom Service Menu	2	Primary	Primary
8	Other	1	Custom Service Menu	2	Primary	Primary
9	Other	1	Custom Service Menu	2	Primary	Primary
10	Other	1	Custom Service Menu	2	Primary	Primary
11	Other	1	Custom Service Menu	2	Primary	Primary
12	Other	1	Custom Service Menu	2	Primary	Primary
13	Other	1	Custom Service Menu	2	Primary	Primary
14	Other	1	Custom Service Menu	2	Primary	Primary

3. Set to 2...

View 1-64 of 64

OK Cancel Apply

**When the system is in Day Mode, Custom Service Menu 1 will be played.**

**When the system is in Night Mode, Custom Service Menu 2 will be played.**

### **Custom Service Menu Greeting:**

**Don't forget.**

**You MUST EXIT system programming with your computer before you can record Custom Service Menu Greetings.**

- 1. Press the Intercom button on any telephone then raise the handset and dial 500.**
- 2. When answered dial #6\*998 (POUND SIX STAR NINE NINE EIGHT)**
- 3. Enter the Administrators Password, followed by a #. (POUND) If required.**
- 4. Dial 4 to "Modify Message"**
- 5. Dial 3 to "Change The Custom Service Menu"**
- 6. Enter the Custom Service Menu Number 1 to 100.**

**Most Panasonic Voice Mail systems will use Custom Service Menu 1 as the Day Menu and 2 as the Night Menu.**